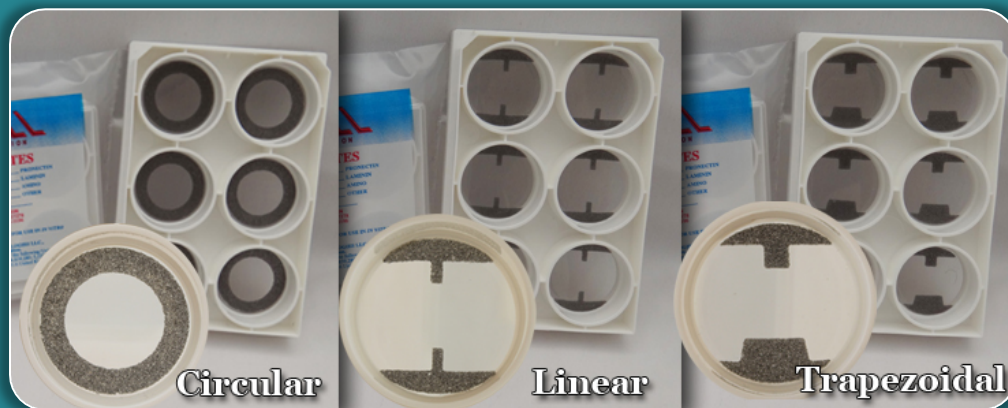


FLEXCELL®

INTERNATIONAL CORPORATION

APRIL 2015 NEWSLETTER

Vol. 2
No. 2



Tissue Train® Culture Plates

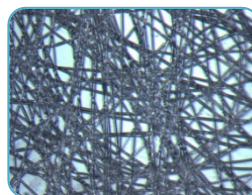
Flexcell® Tissue Train® Culture Plates...

with **NEW** foam anchor stems!

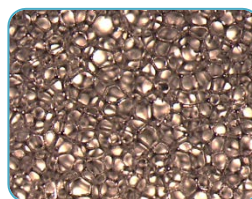
Flexcell® Tissue Train® Culture Plates are now available with either **Cerex** (a non-woven nylon mesh) or **foam** (open-cell porous) anchor stems. The Tissue Train® System can be used to create and mechanically load 3D, tissue engineered, cell-seeded, hydrogel constructs.

Anchor material has not been found to effect the compaction kinetics of the collagen gel. However, the foam anchor stems allow for **increased construct survival time** as measured by time to construct failure/detachment from the anchors (see Tech Report 113 for data, available online at <http://www.flexcellint.com/reports.htm>).

Call Flexcell® today to get two **FREE** sample foam Tissue Train® culture plates.



CEREX



FOAM

PATENT NOS. 4,789,601;
4,822,741; 6,048,723; 6,998,265.

Meet Dr. Wall...

Flexcell®'s **Director of Project Management**, Michelle Wall, has been working for Flexcell® since 2007 helping to development new products. She has a B.S. in Engineering Science & Mechanics from the University of Tennessee, Knoxville, a Ph.D. in Biomedical Engineering from the University of North Carolina at Chapel Hill, and did her post-doc at NC State University. Dr. Wall can also be found at the Flexcell® booth at several tradeshows throughout the year, where she is happy to meet new and existing customers.

Current Sale!

10% OFF 6-well Tissue Train® Culture Plates

Upcoming Sales!

May—10% OFF 6-well UniFlex® Culture Plates

June—5% OFF Thermanox® or Collagel®

July—5% OFF FX-5000™ Tension, Compression, or Tissue Train® Systems

See website each month for more details

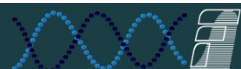
www.flexcellint.com

Upcoming Tradeshows

Regenerative Medicine Workshop

May 13-16, 2015
Hilton Head, SC

2015 Cell Biology ASCB Annual Meeting
December 12-16, 2015
San Diego, CA



Flexcell® International Corp. • 2730 Tucker Street, Suite 200 • Burlington, NC 27215
(919) 732-1591 • (800) 728-3714 • info@flexcellint.com • www.flexcellint.com

